

Theme: Webinars
See information to right on the wide variety of webinars being offered by IISE and other professional societies



Chapter members are invited to set up a site tour of their employer's facility for the chapter's membership, in exchange for half off membership dues for a year. The tour ideally should include at least one topic of interest to IISEs, examples automation, just in time, lean, logistics, etc. The brief proposal should include the name of the employer, the location of the facility, the approximate size of the facility, a sentence or two about the focus of the proposed tour, any date or time suggestions and/or restrictions for the tour, and contact information for a contact person who can arrange such tour.

January Events



Tuesday, February 8, 2022, at 6:30 PM via WebEx

Our February and March meetings will be a two-part webinar series presented by Manny Veloso of CI Consulting Services

Lean Where You Least Expect It

Part-One is on Tuesday, February 8, 2022, at 6:30 PM

When we implement Lean as a group or team effort, we can achieve great results by working together. However, there are great gains to be made in using Lean habits in your personal life. Join the webinar and get ideas on implementing Lean habits at home, work, and out in the world. Learn about:

- Strategies to be more efficient at approaching tasks at home
- Ways to speed up access to your computer files
- The way to engage all employees in continuous improvement activities

To register please click on this registration link:

<https://asq.webex.com/asq/j.php?RGID=rd5a1741f2c41668f8050a9c49ce6b71c>

INSIDE

April Programs	1	Chapter Officers	4
President's Message	2	Career Development	5
CAR Article	3	Treasurer's Report	7
Event News	3	Membership Report	7



IISE Webinars

Feb 22, 11:30-12:30 ET

Integrated LeanSigma: How to ensure you are tapping into its Full Potential

In this offering, we'll overview how to design, develop, implement and deploy successful Integrated LeanSigma programs. We'll provide case examples from successful initiatives/deployments.

We'll cover program design elements and then also provide case examples of exemplary ILSS projects that have been done in a variety of different organizations.

You'll come away with an appreciation for ILSS, how the DMAIC and DfLSS (Design for Lean Sigma) methodologies work and can be deployed systematically in your organization. We'll also share how Lean, SixSigma, Op Ex, Operational Analytics, are now all becoming tightly coupled, very integrated.

Register for the webinar at:

https://us06web.zoom.us/webinar/register/WN_RYf_Hk4aRneI8DIh_4zYgg

President's Message

We have a real interesting program scheduled later this month on - on Integrated LeanSigma. I hope it catches your fancy and is something you might want to participate in. Our program director, Kevin Drevik continues to do an outstanding job in finding topics and events that can continue the growth of our membership.

I'm so sorry to hear about the passing of Tom Masapollo. He was one of the pillars of the South Jersey Chapter. A former chapter president and long-time program director; on a personal level, he was also the man who recruited me to the chapter board. At the time (1996), my employer {Fleer Corporation – a 100 year+ Philadelphia company), decided it didn't want to be a manufacturer anymore. With the advantages of NAFTA, our confectionary business went to Mexico and baseball/football/basketball trading cards went to subcontractors. So I had some time on my hands.

Not only was the timing of Tom's call right; it was also very fortuitous for me. Unemployment is fun; associating with high quality people is a blessing. My mouth doesn't express as much gratitude found in my heart; but the help extended to me during this time solidified my belief in IISE. I received some great advice, encouragement, resume critiques, and even a serious job consideration. The position I eventually took was a different direction – but the realization that these men, like Tom had my back emphasized the value of IISE. And as Bob Siebeneicher used to preach; the time to build your network is before you need it; not when you need it. I might have violated that axiom.



Watson Dean (1st SJC President and Director of Programs Tom Masapollo – Sept 1999

When Tom was program director, as Paul Siebeneicher noted, he had a fancy for T-bone steak dinners as part of our programs. This was at a time when the chapter could guarantee an attendance of 12-18 people for program meetings. Our programs always consisted of thought-provoking subjects. One from back several years emphasized the dire need to modernize our ports – many great themes aren't fully appreciated when they should be.

On a different note; we're seeing the loss of our Boeing members on our membership roll. Hopefully yjis is a timing issue. Boeing has been a long-time corporate sponsor of IISE. The Institute and our chapter have been appreciative of this sponsorship. Hopefully, the sponsor of this sponsorship is still ready & willing. Boeing has been a strong contributor to this chapter and has sponsored several plant tours. Not mention employees many IE's!!! The strongest way to contribute to the profession!

Our government is offering free (4) covid test kits to each family/household. They are easy to obtain with minimal information required (name, address, email) to obtain the kits. That link is <https://www.covidtests.gov/>. Orders are expected to ship in 7-12 days. I hope you find no need to use them. All the best!

John McGowan, PE
Chapter President

Chapter Progress Article

**Future City Competition –
Philadelphia Region UPDATE**

The mission of the [DiscoverE Future City Competition](#) is to provide a fun and exciting educational engineering program for middle school students that combines a stimulating engineering challenge with a "hands-on" application to present their vision of a city of the future.

The Philadelphia Regional Future City Competition is a 501.c.3 educational outreach program of [DiscoverE](#). It is one of over 50 regional programs conducted throughout the United States and the world with the goal to introduce middle school students to the engineering profession. The Future City Program continues to be on the National Assoc. of Secondary School Principals' National Advisory List of Student Contests and Activities.

The Philadelphia Regional Competition draws schools from Philadelphia and surrounding counties including the Lehigh Valley, Southern New Jersey and Delaware. Students from middle schools and after school programs in the region form teams consisting of 6th, 7th, and 8th grade students who work with a teacher and an engineer mentor from September to January.

The 2021—2022 Future City Theme is Designing A Waste-Free City

Imagine a city 100 years in the future that generates no waste and no pollution. Is this even possible? If we look to the natural world, the answer is yes! In nature, one organism's waste is another organism's food. Nutrients and energy flow in a cycle of growth, decay, and reuse. This is called a circular system.

All around the world, engineers, city planners, innovators, entrepreneurs, and government leaders are using the principles of a circular economy to create waste-free cities. They are designing out waste and pollution, keeping products and materials in use, and regenerating natural systems.

The Competition Challenge:

Design a waste-free city that uses the principles of a circular economy.

RESULTS

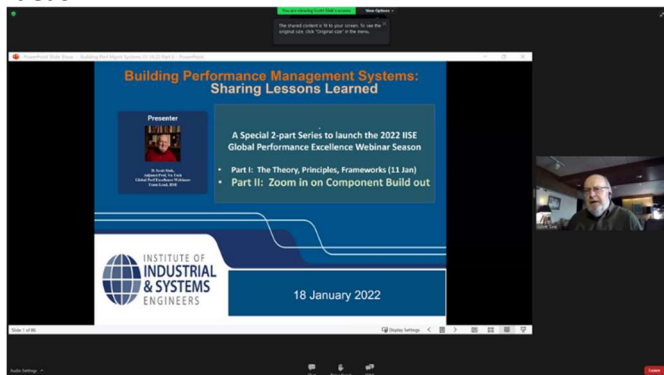
The competition was won by **Downingtown Middle School**; followed by 2nd place Lionville MS, and 3rd place St. Cecilia. The Institute of Industrial & Systems Engineers, South Jersey Delaware Valley Chapter's **P. Robert Siebeneicher Industrial Engineering Award** went to **Drexel Hill Middle School**.



1st Place – Downingtown MS

Event Report

IISE held a good webinar on Jan 11th on building performance management systems. This is one of the traditional roles of Industrial Engineers, and also one of the areas that the US has fallen off of as its manufacturing has moved overseas. Some excellent ideas.



Delaware Valley Senior Chapter No. 132 Officers & Directors

John McGowan, PE

President

(H) 856-722-4593, (F) 856-722-7768

john.p.mcgowan@lmco.com

Nic LeGall

Vice President

nic.legall@gmail.com

Paul Siebeneicher

Secretary, Director of Internet Communications & Web Site Master

paulsehn@yahoo.com

(C) 856-630-5564

Rick Huysie

Treasurer

(H) 856-931-7352

John McGowan, PE

Director of CPP Report & Engineer's Week -

(H) 856-722-4593, (F) 856-722-7768

john.p.mcgowan@lmco.com

Kevin Drevik

Director of Communications/Newsletter and Programs

(C) 856-630-2485

KDREVIK@yahoo.com

Fred Rixon

Director of Membership

(W) 856-428-7400, (F) 856-428-1270

fredrixon@precisionautomationinc.com

Marven Chin

Director at Large

Mmchin8893@comcast.net

IIE EVENTS & TRAINING

February

Feb 14: Principles in Patient Flow and Throughput Livestream (Norcross GA)

Feb 21: Six Sigma Black Belt Livestream (Los Angeles, CA)

Feb 28: Work Measurement (Norcross GA)

March

Mar 7: Lean Green Belt Livestream (Norcross, GA)

Mar 7: Introduction to Engineering Analytics Livestream (Norcross GA)

Mar 14: Artificial Intelligence using Design Thinking – Livestream (Norcross GA)

Mar 15: Six Sigma Green Belt for Process Improvement (Los Angeles CA)



Network and benchmark with other members through industry- or discipline-specific groups.
JOIN A SOCIETY OR DIVISION NOW!

CAREER CENTER

South Jersey Delaware Valley Chapter Employment Assistance Network

Are You Looking For A Job? Do You Know Of A Job Opportunity?

Contact The SJC Employment Assistance Network:
Email your name or any hot opportunities to Kevin Drevik at Kdrevik@aol.com

Job Title

**Instructional-track Faculty Position, Open Rank Engineering, Management & Technology (Industrial & Systems Engineering)
Temple University**

The Industrial & Systems Engineering program within the Department of Engineering, Management and Technology at Temple University, has an opening for an instructional-track faculty with an anticipated start date of Fall 2022.

To be considered, candidates should possess a Ph.D. in either Industrial or Systems Engineering (or a closely related field) and have excellent communication skills. Applicants with relevant industrial/professional experience are also encouraged to apply. The successful candidate will be expected to teach courses leading to the B.S. in Industrial & Systems Engineering, demonstrate a strong commitment to student success and enhance the teaching, service and research capabilities of the program.

At Temple University, instructional-track faculty lines are renewable appointments with excellent benefits, and long-term contracts are awarded for strong performance. Beyond teaching, duties include the mentoring of senior-design-project teams and academic service activities relevant to pedagogy. While promotion of instructional faculty is based principally on outstanding teaching and quality of service. other considerations include factors such as curriculum development, pedagogical innovation or program coordination.

Temple University is a comprehensive urban institution located in Philadelphia, Pennsylvania; it serves a diverse population of nearly forty thousand full-time students and it operates seventeen distinct colleges, including five professional schools. To apply, a cover letter, CV, a statement of teaching and research interests, and the names of at least three references, all in a single pdf, should be emailed to: ntt-ise@temple.edu using the subject line "NTT-ISE".

Process Engineer
The Judge Group
Maple Shade, NJ
72.3K to \$91.5K per year

Job Summary

This job will have the following responsibilities:

- You support the timely implementation of process changes related to capital improvement projects.
- You provide thought leadership to other process engineers
- You support the manufacturing operation's ongoing cost and quality improvement goals by assisting in designing and modifying new and existing manufacturing equipment and processes.
- You drive process control improvements and reduce process variation through the application of six sigma tools.
- You perform simple statistical analysis, evaluate new materials, maintain process documents and procedures, track and analyze process variables.
- You recommend equipment and hands-on training of operators as required.
- You provide engineering support for the startup of new equipment and processes.
- You provide recommendations and engineering support for specification, purchase, startup, and operator training for capital equipment and process upgrades.

Qualifications & Requirements:

- Bachelor's Science degree in Engineering required.
- 3+ years' experience in a manufacturing environment
- You have experience working with teams and team building.
- Previous ISO 9001-2015 experience with implementation, improvement, and sustainment.
- Previous Six Sigma exposure/experience. Green Belt / Black Belt certification a plus.
- You can work in a fast-paced environment, multi-task, and work effectively under pressure.

Federal Government: IT Specialist jobs

The following Nationwide job vacancy is posted on www.FBIjobs.gov

Position: IT Specialist (System Admin/Customer Support) GS 7/9/11/12 (Open to All U.S. Citizens)

- ID Number: 41683
- Closing Date: 02/04/2022 @ 11:59 PM (EST)
- Location: Nationwide

Questions regarding this opening should be directed to FBI_FOStaffing@fbi.gov

AutoCad Project Engineer **MHS Lift**

Duties and Responsibilities:

- Draft and design layout of equipment, processes, material flow, and workspace to illustrate maximum efficiency, using drafting tools, Auto Cad and Other computer software
- Get pricing from vendors and installers and put together proposals to be delivered to our customers for their review and approval
- Review production schedules, engineering specifications, orders, and related information to obtain knowledge of manufacturing methods, procedures, and activities
- Analyze statistical data and product specifications to determine standards and establish quality and reliability objectives of finished product.
- Coordinate cross functional teams to recommend methods for improving utilization of personnel, material, and utilities
- Manage complete project life cycle, from concept design through implementation and validation.

Job Requirements

- Bachelor's degree in Industrial Engineering or related technical discipline required.
- Must be able to draft in Auto Cad.
- Strong analytical and creative thinking skills.
- Ability to multi-task and to solve customer problems, take orders and answer inquiries while completing other assigned tasks.
- Excellent communication skills both written and verbal.

www.linkedin.com

www.linkedin.com

TREASURER'S REPORT



Mr. Richard T. Huysie reports a Treasury Balance of \$6,912.50 as of Jan 26, 2022 for the IIE South Jersey Delaware Valley Senior Chapter No. 132.

MEMBERSHIP REPORT

As of 1/26/2021 the SJDV Chapter has 55 Members. The Boeing members are not counted in this at this time, due to corporate reporting

Please Don't Go! Time to renew your membership

Alfred Schempp
Dawn Weiss
Paul Seibeneicher
Thomas Cassidy

Don't forget to renew your IIE Membership!

Your support of your professional society is greatly appreciated. We value your Membership!

Did you know ...

The IIE South Jersey Delaware Valley Chapter will reimburse 50% of Member's Dues if he/she recruits a new full-dues paying member? Please contact the membership director prior to your associate's joining of IIE.

Did you know ...

The IIE South Jersey Delaware Valley Chapter will reimburse 50% of Member's Dues if he/she sets up a site tour of their company's facility for chapter members to attend? Please contact the membership or newsletter director for more information.

Check out our Chapter's Website!!

<http://paulsehnen.wixsite.com/iiesjdvpvc>

Quote for Today: "Each person acquires their own character, but their official roles are designated by chance. You should invite some to your table because they are deserving, others because they may come to deserve it."

Seneca

IIE-SJC Newsletter Advertising Rates

Ad Size	Run Length	Cost	Full Year
1/8 Page	Single Issue	\$20	\$100
¼ Page	Single Issue	\$25	\$250
½ Page	Single Issue	\$75	\$400
¾ Page	Single Issue	\$75	\$450
1 Page	Single Issue	\$100	\$500

Our sincere thanks to our Classified Advertisers for their strong Chapter support! Please patronize them during the year!



Kevin Drevik
Newsletter Editor
South Jersey Delaware Valley
Chapter No. 132
IISE, Incorporated
20 Crider Avenue
Moorestown NJ 08057